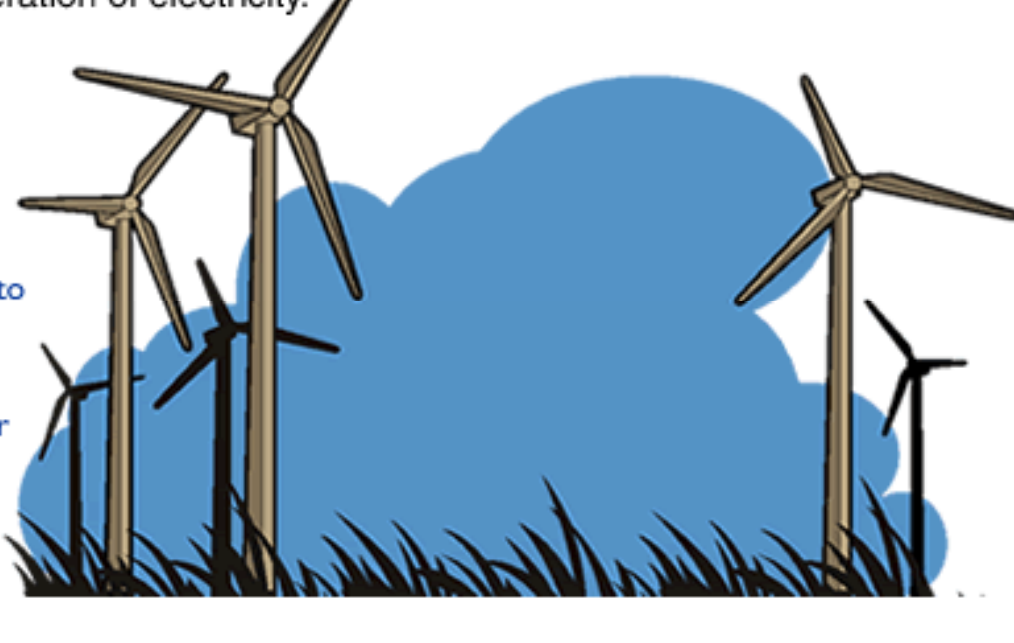




Big Island is a wind power leader

Of all available renewable energy sources, wind energy is under the greatest expansion. And in Hawaii, the Big Island leads the State in the development of wind-driven generation of electricity.

Artist's rendition of wind generators to be installed at the Hawi Renewable Development Wind Farm, which is under construction in the Big Island's North Kohala district



The island's newest wind farm, under construction at North Kohala's Upolu Point, is the Hawi Renewable Development (HRD) Wind Farm, owned by Hawi Renewable Development, LLC of Chico, California. Expected to be operating in December 2005, the wind farm will consist of 16 wind turbines, each rated at 660 kilowatts.

When wind is available, and the HRD Wind Farm is at full output, the new plant can generate up to 10.56 megawatts of electricity. HELCO has signed a 15-year contract, approved in May 2004 by the Hawai'i Public Utilities Commission, to buy electricity from the wind farm for distribution to its customers. HELCO will soon be upgrading the distribution system that will deliver electricity from the HRD Wind Farm to HELCO's Hawi Substation. The installation of power transmission lines requires the replacement of existing power poles with new, taller poles that can support the additional weight and provide the necessary clearance. The new poles will also carry Verizon telephone lines and Hawaii County's street lights.

The new transmission system is being built over an existing distribution line along Upolu Airport Road and Akoni Pule Highway. The new line will be completed in November 2005 and will be put into service the following month.

Also in this issue:

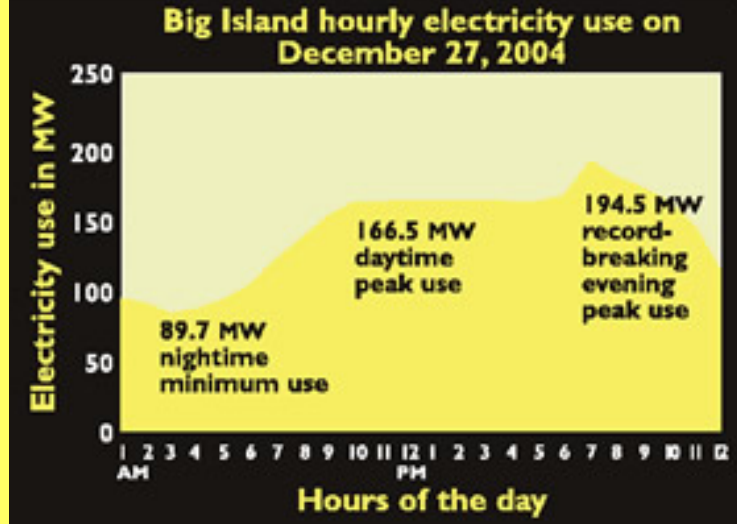
[Record electricity use](#)

[Start your electric engines!](#)

[Recipe of the month](#)

Record electricity use

The Big Island's electricity use hit a record high of 194.5 megawatts (MW) on Monday, December 27, 2004, at 6:42 p.m. This eclipsed the previous peak of 191.4 MW reached only one week earlier, on Monday, December 20, at 6:33 p.m.



The times of greatest demand, when electricity use peaks, are during week nights just after sunset and continuing until about 8:00 p.m. Historically, the highest peak demands of the year occur on Monday nights, 40 to 50 minutes after sunset, during the months of November and December. During these months tourism increases and retail activity is high.

During peak-use hours we operate our peaking generators, the smaller generators that are required to supply the extra amount of electricity that is above the normal base electricity use. These peaking generators use more expensive diesel fuels, not the lower-cost fuel oil used in the base-load generators. This ends up costing you, our customers, more money.

You can help minimize the use of higher-cost diesel fuel by not wasting electricity during peak times and by postponing the use of high-energy-demand appliances until later. Turn off unnecessary lights and the T.V. when no one is watching and delay using your electric clothes dryer and the appliances that draw from your electric hot water heater until after 8:00 p.m.

Start your electric engines!

Teams from 30 high schools across the state are in the final stages of preparation for the **10th Annual Hawaiian Electric Electron Marathon**, an exciting one-hour race of electric vehicles designed and built by students. Race day festivities will take place from 9:00 a.m. to 12:30 p.m. on Ford Island at Pearl Harbor on **Saturday, March 19, 2005**.



The team from Iroquois Point Home School on Oahu won last year's Hawaiian Electric Electron Marathon.

High school teams build their electric vehicle using basic parts provided to them by HELCO and its affiliates, HECO and MECO. The teams are judged on the performance of their electrically powered vehicle, on the vehicle's construction and safety, on the best documentation of the vehicle, and on the best oral presentation about the vehicle.

The event is cosponsored by the U.S. Navy and the Hawaii State Department of Education. Partners in the event are HELCO, MECO, U.S. Department of Energy, and Young Brothers, which donates the transportation of the electric vehicles from neighbor islands to Oahu.

Admission to the popular race day festivities is free and open to the public. For more information go to www.heco.com and find Electron Marathon listed under the *Generation e* link at the top of the home page.

Electron Marathon schools from Big Island

Hawaii Preparatory Academy
Honokaa High School
Kohala High School

Lanakila Learning Center
West Hawaii Explorations Academy

RECIPE OF THE MONTH

Chicken Stew (Galinha Estufada)



- 1 (4 to 5 lb.) whole chicken
- 4 tablespoons olive oil
- 1 large onion, diced
- 3 stalks celery, diced
- 2 small carrots, diced
- 1/2 tablespoon paprika
- 4 cloves garlic, chopped
- 1 bay leaf, torn in half
- 1 whole allspice, crushed
- 1 teaspoon coarse salt (such as kosher salt)
- 1/4 teaspoon freshly cracked black pepper
- 1 cup white wine
- 4 small potatoes, cubed
- 3 cups chicken stock
- 1 can (14 1/2 oz.) diced tomatoes, including liquid
- 1 cup fresh or frozen peas
- 3 tablespoons finely chopped Italian flat leaf parsley

Cut chicken into serving pieces; rinse and pat dry. In a 5-quart Dutch oven or large saucepot, heat 2 tablespoons of the oil and brown chicken pieces; remove. Add the remaining 2 tablespoons oil, the onion, celery, carrots, paprika, garlic, bay leaf, allspice, salt, and pepper; sauté for 10 to 15 minutes, or until vegetables are golden brown. Add the wine and potatoes; cover and cook for 5 minutes. Add the chicken, chicken stock, and tomatoes; simmer over medium-low heat for 30 minutes. Stir in the peas and parsley; cover and simmer for 3 minutes. Recipe makes 6 to 8 servings.