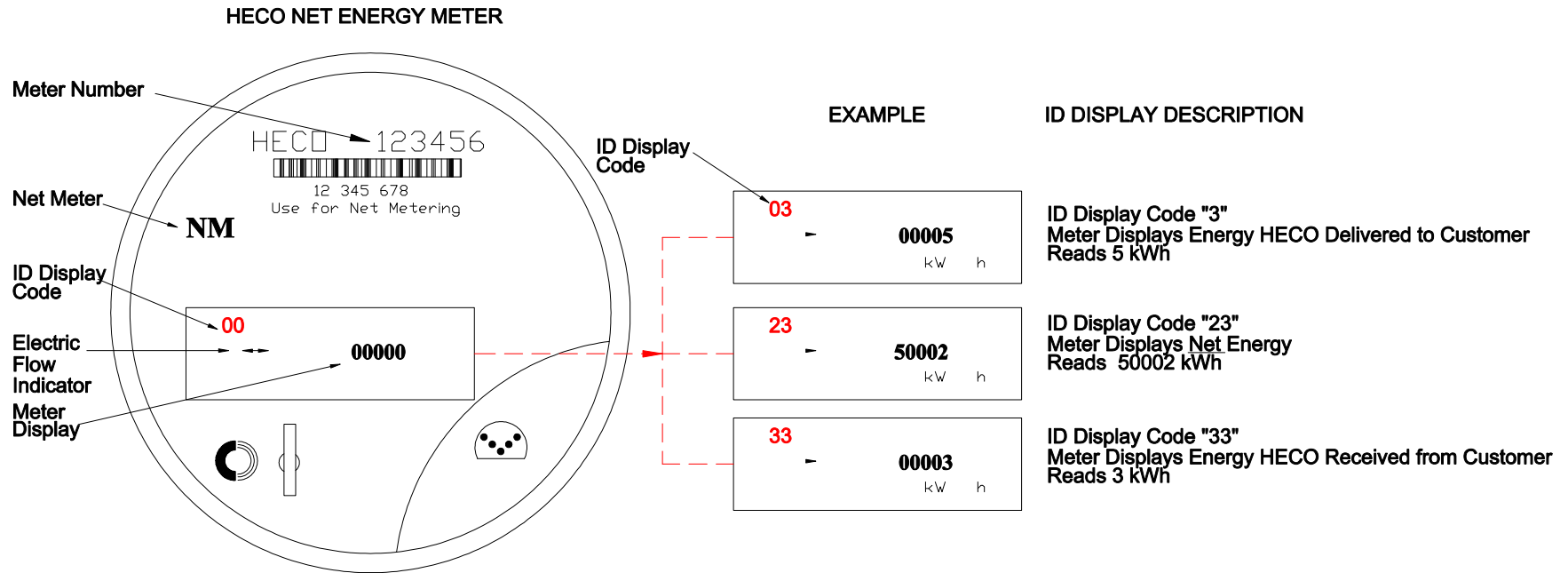


NET Energy Meter Display



NOTES:

- The NEM meter is a solid state, multi-measurement, highly accurate electronic meter capable of measuring the flow of energy in both Forward (HECO Deliver) and Reverse (HECO Receive) directions. When the electric flow indicator points to the right, HECO is Delivering energy to the customer. When the indicator is pointing left, HECO is receiving energy from the customer.
- The NEM meter will scroll through several screens as shown in the example above. Refer to the ID Display Code to determine what information is being displayed.
- The NEM energy readings will increment based on the amount of power used over a period of time similar to how a car's odometer will increment for the distance traveled.
- The NEM meter is initially installed with the Delivered and Received energy registers at 00000. The Net Energy registers are initially set at 50000. This is to avoid negative Net Energy meter readings.
- The NEM customer is billed off the Net Energy Readings (ID Display 23).

Example	ID Display Code	Current Reading	Previous Reading	Consumption
Net Energy	23	50002	minus 50000	= 00002

- Net Energy readings can also be confirmed by reading the HECO Delivered (ID Display Code 03) minus HECO Received (ID Display Code 33).

Example	ID Display Code	Current Reading	Previous Reading	Consumption
Energy Delivered	03	00005	minus 00000	= 00005
- Energy Received	33	00003	minus 00000	= 00003
Net Energy				00002